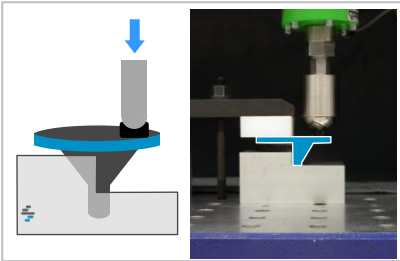


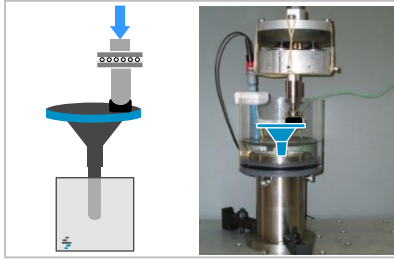
# KNEE IMPLANTS – Test Methods

## Tibial tray and bearing

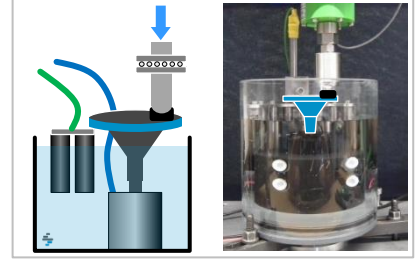
ISO 14879-1 & ASTM F1800



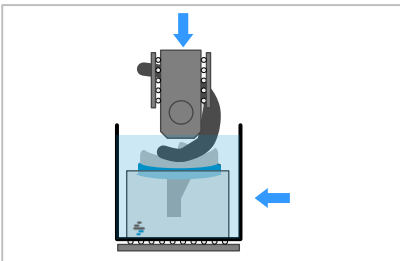
S05



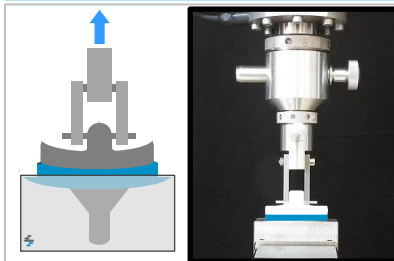
S15 (ASTM F1875)



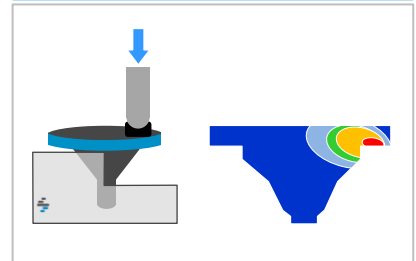
ASTM F1814



ASTM F1814

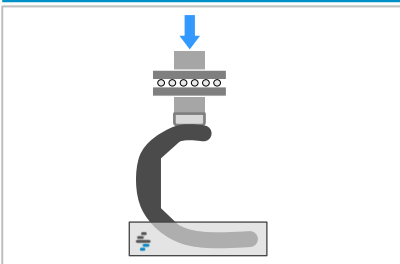


ASTM F3334

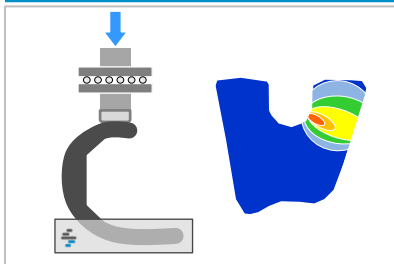


## Femoral component

ASTM F3210

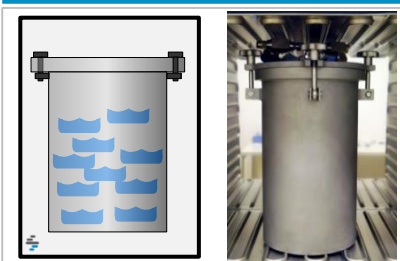


ASTM F3161



## Aging

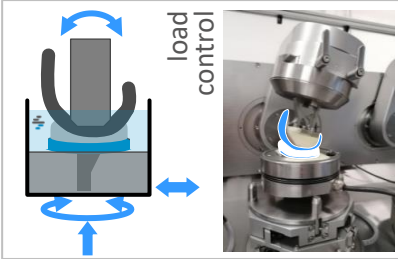
ASTM F2003



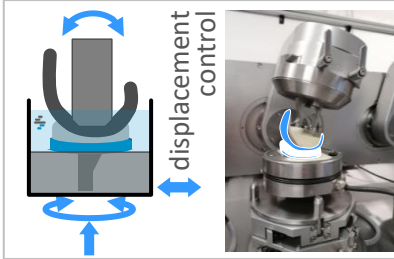
# KNEE IMPLANTS – Test Methods

## Total knee replacement

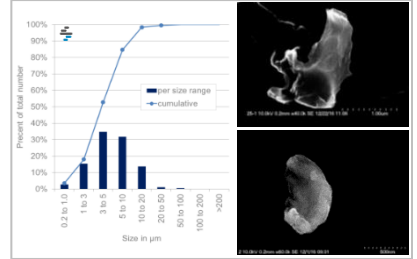
**ISO 14243-1 &  
ISO 14242-2**



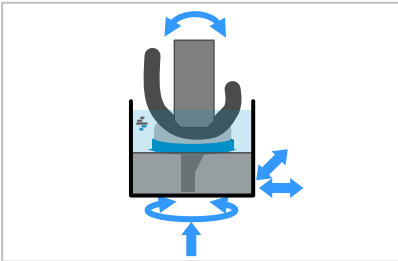
**ISO 14243-3 &  
ISO 14242-2**



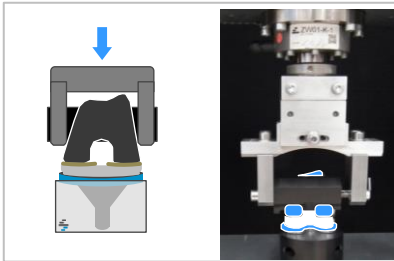
**ASTM F1877 &  
ISO 17853**



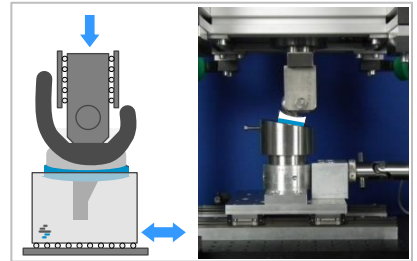
**ASTM F3141**



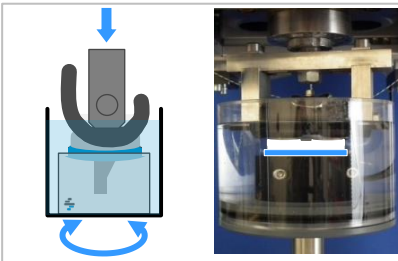
**ASTM F2083**



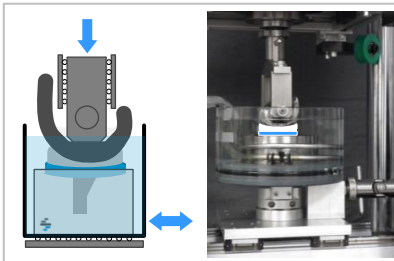
**ASTM F1223**



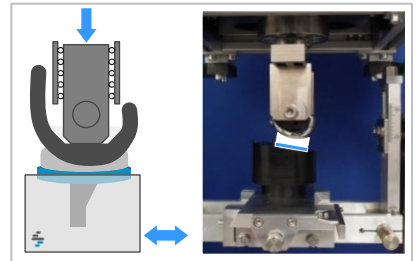
**ASTM F2722**



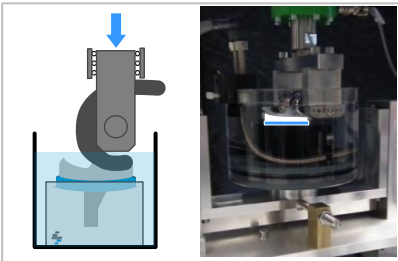
**ASTM F2723**



**ASTM F2724**

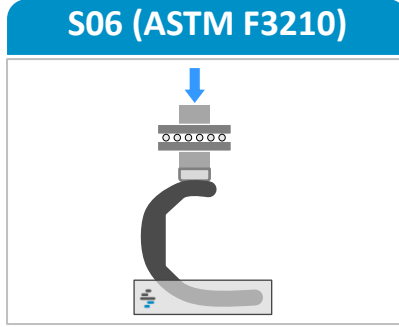
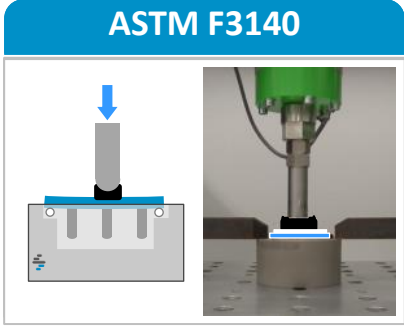


**ASTM F2777**



# KNEE IMPLANTS – Test Methods

## Unicondylar knee prostheses



## Patella implants

